

Sustaining Partnerships

Cultivating an Ecosystem for
Sustainability Promoting Practices

December 13, 2023





Poll Time

How would you describe your level of experience with community partnership sustainability?



CCPH Mission

Community-Campus Partnerships for Health promotes **health equity** and **social justice** through partnerships between communities and academic institutions.



CCPH's Strategic Pillars



Leading



Convening



Disseminating



Partnering



Training



CLINICAL
SCHOLARS

Clinical Scholars:

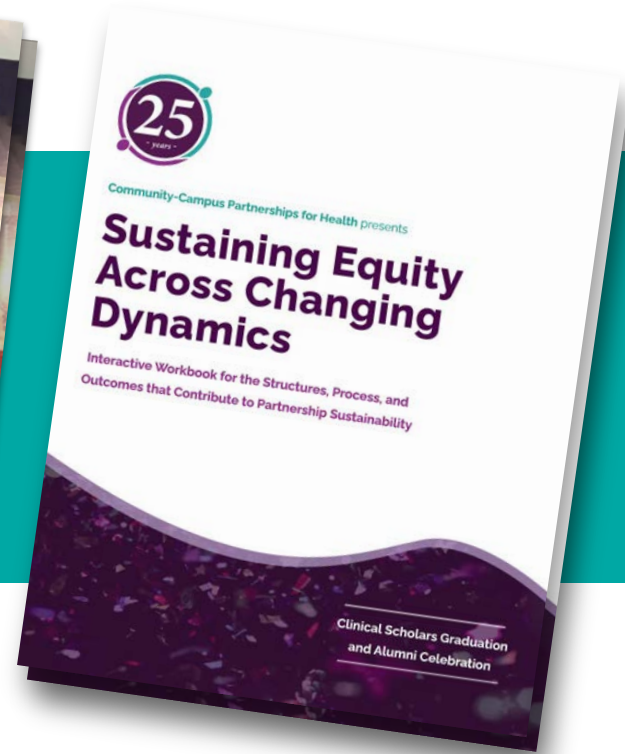
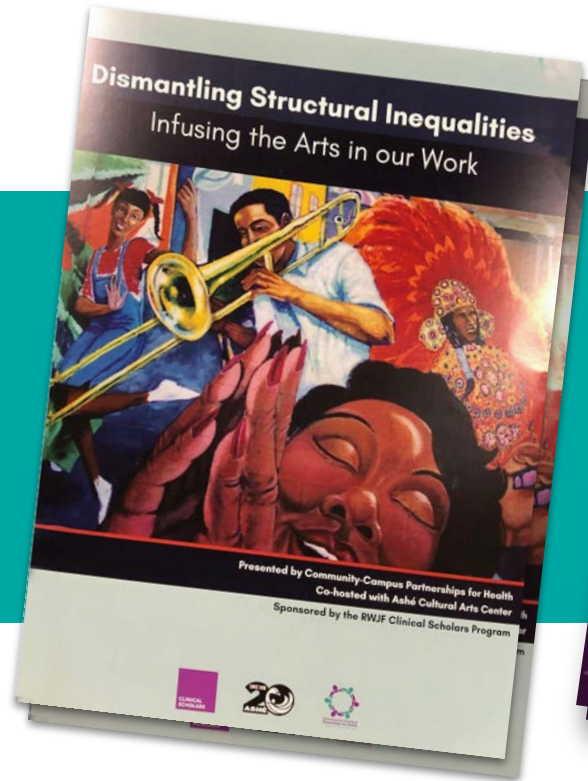
Equity Centered Leadership

Funded by RWJF: Left to right: Tour at Stagville Plantation, NC, Structural Racism Intensive Presentation; Service trip at para la Naturaleza; Breakout session at the Clinical Scholars Graduation and Alumni Celebration





Sharing Technical Expertise





Icebreaker

- Name and pronouns
- Where are you from?





Learning Outcomes



**Review components
of authentic
partnerships**



**Describe an
ecosystem of
partnership
sustainability**



**Describe practices
that promote
sustainability**

Key Terms

- Principles of authentic partnerships
- Sustainability
- Sustainability promoting practices



Chat Storm

Please share - What community partnerships have you worked with?

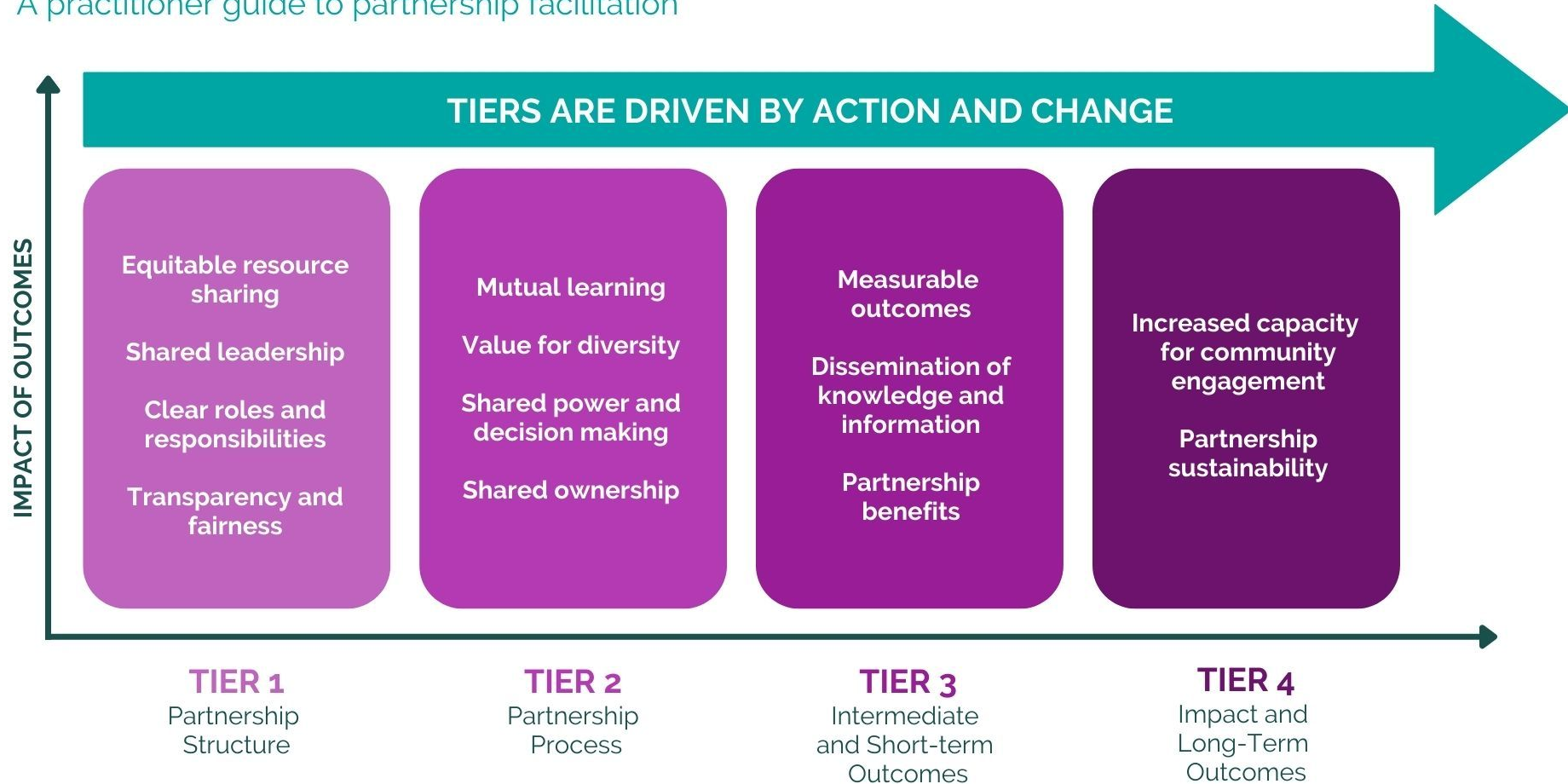


CCPH Model for Authentic Partnerships



CCPH Principles of Partnership (PoP)

A practitioner guide to partnership facilitation



Sustainability

Supporting an **ecosystem** that advocates for beneficial relationships between academic and community partners

Maintain the partnership's work and/or ongoing relationships to:

- Achieve collective goals
- Respond to challenges and opportunities that impact the long-term viability of the partnership



Building Ecosystems for Health Equity

Distinguish between:

- Sustaining the work of the partnership, and
- Sustaining ongoing relationships among partners

Work toward partnership goals over time—regardless of available resources

Persevere through changes that impact your partnership





Building Ecosystems for Health Equity

Foster capacity of partners beyond scope of present partnership

Enhance partnership structure and membership to sustain ongoing relationships

Advocate for your partnership at the institutional level





Equity-Promoting Practices



Evaluate and monitor adherence to partnership principles over time

Enhance the capacity of partners to sustain the work

Actions:

- Optimize indirect rates
- Mentor community leaders
- Challenge traditional evaluation



Chat Storm

*List some ways to sustain partnerships
between funding.*



Panel of Experts



Shemecka McNeil
Executive Director and
Founder, SLICE 325



Al Richmond, MSW
Executive Director, Community-Campus
Partnerships for Health



Explore CCPH's Training Offerings

Schedule a training session tailored to your organization's specific needs!





Any Questions?



Feel free to reach out at:
feedback@ccphealth.org



Post Workshop Evaluation



Please take the next **2 minutes** to complete this short evaluation:

https://ccpoh.qualtrics.com/jfe/form/SV_efA2DYN4acL8mlU



Thank You!



Visit our website: www.ccphealth.org



twitter.com/CCPH_News



facebook.com/CommunityCampusPartnershipsforHealth



linkedin.com/company/community-campus-partnerships-for-health



Save the Date!

Join us for future Lunch & Learn events.

Qualitative Research 101

January 10, 2024, 12pm - 1pm ET