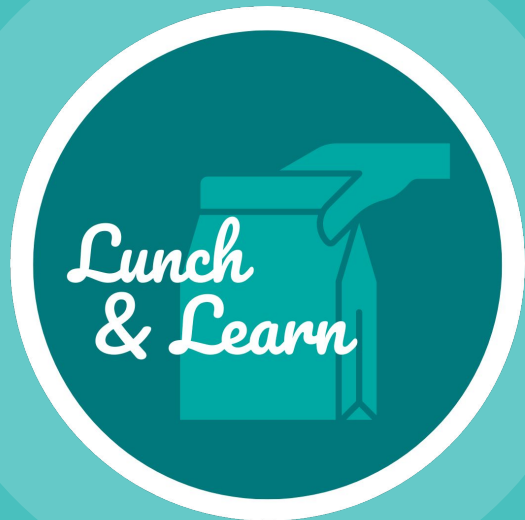


# Community Advisory Boards

Building and Sustaining  
Community-Led Infrastructure

**September 13, 2023**





# CCPH Mission

Community-Campus  
Partnerships for Health promotes  
**health equity** and **social justice**  
through partnerships between  
communities and academic  
institutions.



# CCPH's Strategic Pillars



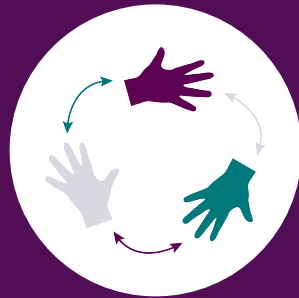
Leading



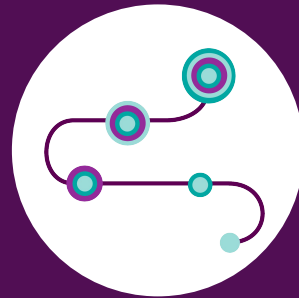
Convening



Disseminating



Partnering



Training



# Poll Time

*Which aspect of Community Advisory Boards  
would you most like to learn about?*



# Icebreaker

Consider sharing your:

- Name and pronouns
- Community groups you serve and interact with



# Learning Outcomes



**Describe Community Advisory Boards (CABs) and their roles in Community-Based Participatory Research (CBPR).**



**Outline key considerations for forming and sustaining a CAB.**



**List examples of CAB creation, guidance, and evaluation in practice settings.**

# Community Advisory Boards (CABs)

- **Composed of community members** who share an identity, geography, history, language, culture, or other characteristic or experience and convene to contribute community voice to an initiative, program, policy, or project. (Arnos et al, 2021)
- **Provide an infrastructure** for community members to voice concerns and priorities that otherwise might not enter into the researchers' agenda, and advise about suitable research processes that are respectful of and acceptable to the community. (Newman et al., 2011)



# Community-Based Participatory Research (CBPR)

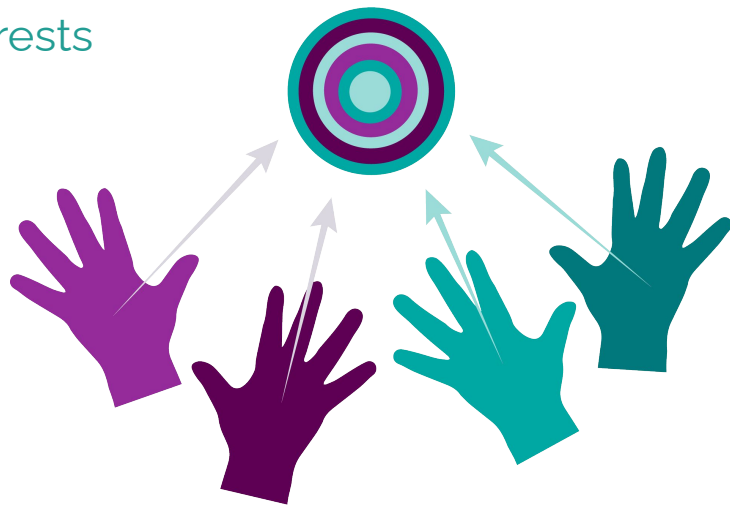
Collaborative research approach designed to ensure and establish structures for participation by communities affected by the issue being studied, representatives of organizations, and researchers in all aspects of the process.

- *Agency for Healthcare Research and Quality (AHRQ)*



# Roles of a CAB

- Identify **community priorities**, needs, and interests
- Develop research **questions**
- Advise on **study design** and approach
- Identify **recruitment strategies** and venues
- Provide **resources** and input for interventions
- Interpret and disseminate **data and findings**
- Promote **community investment** in research





# CAB Members

- Patient representatives
- Community-based organization (CBO) leaders
- Cultural / linguistic liaisons
- Faith-based leaders
- Professional / technical experts
- Lived experience experts

# CAB Formation: Key Considerations



How can a CAB help improve the project's quality and impact?



Are there clearly defined goals, expectations, roles, and scope of work?



Does the project have the staffing and budget needed to support CAB formation and implementation?



How will the project team ensure the CAB represents the broader community?

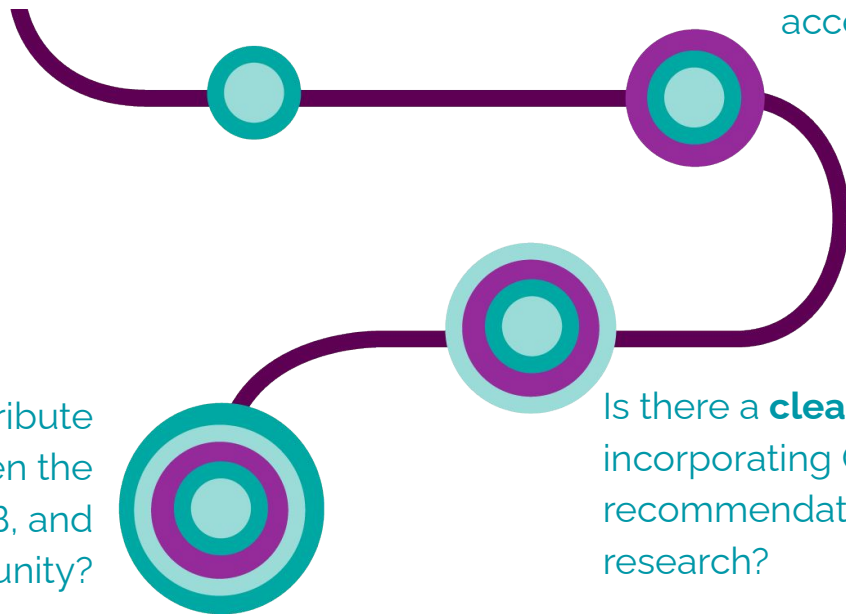
# CAB Operation and Maintenance

Have the CAB members **agreed** upon procedures, bylaws, and decision-making processes?

Are the CAB meeting times and location **accessible** and acceptable to members?

What activities can contribute to **trust-building** between the project team, CAB, and community?

Is there a **clear process** for incorporating CAB feedback and recommendations into the research?





# Chat Storm

*How could you utilize a CAB in your work?*



# Panel of Experts



**RaNaja Kennedy, BS**

Sr Community Engagement Coordinator,  
University of Pittsburgh Clinical and  
Translational Science Institute



**Keri Revens, PhD**

Director, Camino Research Institute



# Any Questions?



**Feel free to reach out at:**  
[feedback@ccphealth.org](mailto:feedback@ccphealth.org)



## Explore CCPH's Training Offerings

Schedule a training session tailored to your organization's specific needs!

# Chan Zuckerberg Initiative







# Thank You!



Visit our website: [www.ccphealth.org](http://www.ccphealth.org)



[twitter.com/CCPH\\_News](https://twitter.com/CCPH_News)



[facebook.com/CommunityCampusPartnershipsforHealth](https://facebook.com/CommunityCampusPartnershipsforHealth)



[linkedin.com/company/community-campus-partnerships-for-health](https://linkedin.com/company/community-campus-partnerships-for-health)



# Save the Date!

Join us for future Lunch & Learn events.

## **Managing Project Start-Up**

October 11, 2023, 12pm - 1pm ET

## **Managing Project Wrap-Up**

November 8, 2023, 12pm - 1pm ET



# References

AHRQ Activities Using Community-Based Participatory Research to Address Health Care Disparities. Content last reviewed April 2020. Agency for Healthcare Research and Quality, Rockville, MD.

<https://www.ahrq.gov/research/findings/factsheets/minority/cbprbrief/index.html>

Arnos, D., Kroll, E., Jaromin, E., Daly, H., & Falkenburger, E. (2021). [Tools and resources for project-based community advisory boards: Community voice and power sharing guidebook](#). Urban Institute.

Kubicek, K. and Robles, M. (2016, November 11). [Resource for Integrating Community Voices into a Research Study: Community Advisory Board Toolkit](#). Southern California Clinical and Translational Science Institute grant UL1TR001855.

Newman SD, Andrews JO, Magwood GS, Jenkins C, Cox MJ, Williamson DC. Community advisory boards in community-based participatory research: a synthesis of best processes. *Prev Chronic Dis* 2011;8(3).

[http://www.cdc.gov/pcd/issues/2011/may/10\\_0045.htm](http://www.cdc.gov/pcd/issues/2011/may/10_0045.htm).