

2023-2024

Lunch & Learn Series Recap

Community-Campus Partnerships for Health

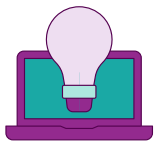
Lunch
& Learn

At a Glance

Practitioner Training on Community-Centered Partnerships

In partnership with Rapid Acceleration of Diagnostics Underserved Populations (RADx-UP), Community-Campus Partnerships for Health facilitated 8 virtual "Lunch & Learn" workshops aimed at practitioners of community-centered research. The workshops:

- Provided practical, applied examples of equitable partnerships
- Encouraged panelists and attendees to share their expertise and lived experiences
- Created space to explore how attendees could apply shared lessons to their partnerships



8

1-Hour Sessions



17

Panelists



41

Resources Created



523

Attendees



Connect with CCPH



2023-2024 Lunch & Learn Series Recap

Community-Campus Partnerships for Health

Lunch
& Learn

Attendee Highlights

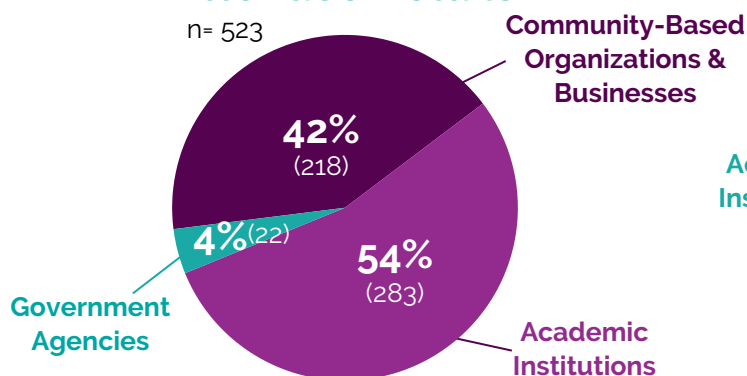
Sessions

Click on any of the session topics to learn more about the session.

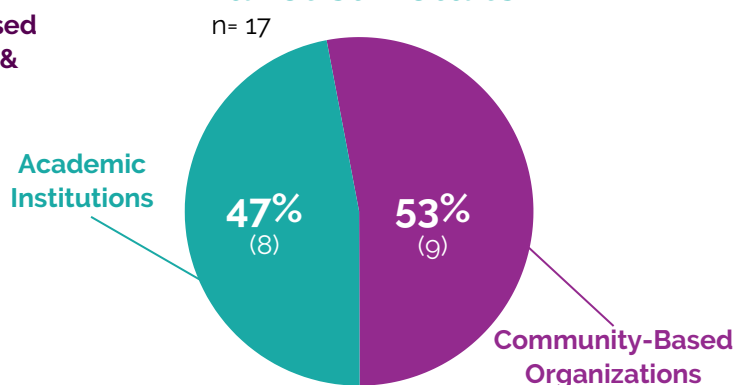
Topic	Date	# of Attendees	*YouTube Views
Participatory Budgeting	June 14, 2023	42	79
Community-Based Participatory Research	July 12, 2023	64	225
Culturally-Responsive Dissemination	August 9, 2023	60	244
Community Advisory Boards	September 13, 2023	77	142
Managing Project Start-Up	October 11, 2023	54	332
Managing Project Wrap-Up	November 8, 2023	39	195
Sustaining Partnerships	December 13, 2023	74	82
Qualitative Research 101	January 10, 2024	113	86

*YouTube view counts are a total of both the English video & Spanish interpretation video for each session as of January 28, 2024

Attendee Details



Panelist Details



Connect with CCPH



2023-2024

Lunch & Learn Series Recap

Community-Campus Partnerships for Health

Lunch & Learn

Evaluation Highlights



Enhancing the Field

"This series is terrific and the topics are very timely and relevant. Thank you for all you do to enhance community-academic partnerships!"

-Participatory Budgeting Attendee

Participatory Budgeting



Understood the purpose and goals of participatory budgeting.



Described the five steps of the participatory budgeting process.



Enhanced their knowledge on how participatory budgeting contributes to health equity.

Community-Based Participatory Research (CBPR)



Understood contrasts between traditional, scientific, and participatory research.



Increased their knowledge on action research in the field.



Explored strategies to advance health equity in the community through action-based research.

Community Advisory Boards (CAB)



Described CABs and their roles in community-based participatory research.



Outlined key considerations for forming and sustaining a CAB.



Enhanced their knowledge on examples of CAB creation, guidance, and evaluation in practice settings.



Connect with CCPH



2023-2024

Lunch & Learn Series Recap

Community-Campus Partnerships for Health

Lunch & Learn

Evaluation Highlights

Sustaining Partnerships



Enhanced their knowledge on the components of authentic partnerships.



Described an ecosystem of partnership sustainability.



Described practices that promote sustainability.

Qualitative Research 101



Understood how the community can strengthen qualitative methodology.



Described ways to create structures to support and sustain community engagement in research.



Centered community experiences to determine qualitative methodology.



Practicing Collaboration

"I appreciate how you demonstrated co-collaboration among the community by having folks who occupy a diversity of roles on the panel and asked attendees to share their own knowledge in the space. Great intention toward practicing collaboration and deconstructing the dominant narrative that academia is the house of knowledge."

- Community-Based Participatory Research Attendee



Connect with CCPH



2023-2024

Lunch & Learn Series Recap

Community-Campus Partnerships for Health

Lunch
& Learn

Building Infrastructure

After examining what attendees shared in the workshops and evaluations, we compiled the following recommendations to further build and strengthen current CCPH infrastructure for hosting events and providing resources.



Respond to Community Needs

Rationale: Based on community feedback, the series name was changed to “Lunch & Learn” because the initial title had racist and classist origins.

Recommendation: Continue to listen and respond to community needs.



Invest in Interpreters

Rationale: The YouTube Spanish interpretation videos had over 500 views.

Recommendation: Increase our YouTube presence to reach a wider audience.



Co-Create Communities of Practice

Rationale: Attendees asked if attendee contact information would be shared.

Recommendation: Facilitate an opt-in networking space.



Build and Standardize Compensation Processes

Rationale: Compensation should be more timely, consistent, and efficient.

Recommendation: Increase speaker honorarium and improve the payment process.



Build Resources

Rationale: CCPH has a breadth of expertise on community-academic partnerships and community-engaged research.

Recommendation: Compile and create mini-resources based on this series.



Connect with CCPH



2023-2024

Lunch & Learn Series Recap

Community-Campus Partnerships for Health

Lunch
& Learn

Stay Connected



Sharing Knowledge

"Thank you CCPH—this is the best way to spend an hour and receive a wealth of knowledge and connect. Thank you."

-Managing Project Wrap-Up Attendee

Lunch & Learn Team



Kunga Denzongpa, PhD, MPH
Data & Evaluation Manager



Emily Finley, MPH
Engagement Lead



Alan Wells, PhD, MPH
Evaluation Specialist

Contact Information



Charisse Iglesias, PhD
Training & Resource Director
charisse.iglesias@ccphealth.org

Stay Connected

- Lunch & Learn Event Recaps
- Subscribe to our Newsletter
- Connect with us on Social Media



Connect with CCPH

