



Community-Campus Partnerships for Health Community Advisory Boards

Lunch
& Learn

Event Summary

September 13, 2023

Key Takeaways



Strategies for creating and maintaining a CAB should be inclusive of time and labor commitments, lived experiences, and priorities.



Community partners are experts in the research, and reciprocity should be embedded in every step of the research process.



Show up for the community the way you hope your community shows up for the research study.

Highlights from the Presentation



Authentic Engagement

"We engage by going out to where [the communities] are. We go to their activities and community events with them. We recruit for studies together."

- Keri Revens



Flexible CAB Participation

Work with community partners to build competency and participation by promoting a "spectrum of engagement."

- Attendee



Engagement Perspective

"Focus on engagement, not recruitment. A lot of times, we confuse the two . . . with really great community engagement can come really great recruitment. However, it's really important to get to know the community and make yourself a little bit vulnerable."

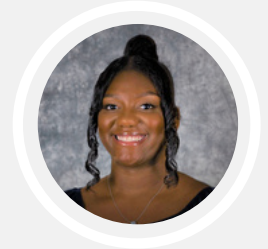
- RaNaja Kennedy

Panelists



Keri Revens, PhD

Director, Camino Research Institute



RaNaja Kennedy, BS

Sr Community Engagement Coordinator,
University of Pittsburgh Clinical and
Translational Science Institute

Facilitator

Emily Finley, MPH

CCPH Engagement Lead

Watch the Recording:

[English](#)

[Spanish](#)

Contact Email:

feedback@ccphealth.org